



CROSSE COUNTY NEWS

OCTOBER 2025



The background of the entire page is decorated with a repeating pattern of stylized pumpkins in shades of orange and red, interspersed with yellow and orange autumn leaves. A large, light-orange rectangular box with a thin dark border is centered on the page, containing the text.

ANNUAL FALL MEETING

The Fall meeting of LAHCE will be held October 13th at Noon at the Holland Town Hall. A soup, salad, and dessert luncheon will be served by the executive board. Following lunch, we will be presented a session on chair yoga by Marty Landry, who teaches chair yoga at the Holmen Community Center.

Following this, we will have the business meeting to report to members about HCE happenings. There will be door prizes also. Invite a friend who you think might be interested so they can see what HCE is about. (There will be no charge for the lunch, but please let your club president know if you plan to attend.) Hope to see a good turn out!

EDITORS REPORT

As a means to promote membership, starting in January, the newsletter will feature our members. We will start with the executive board and then proceed with members according to how long they have been members. This will be a means to get to know members better and find out about them and their experience in HCE.

Sheryl Smith, Editor



BOOKWORMS

Our Bookworms program at Head Start begins in October. There are 8 classrooms, down 3 from last year due to a new government requirement that all classes, 16 students per class, are full day. Half day classes had to be cut.

The Jackson County HCE is making a quilted wall hanging and asked each county in the West District to create a quilt square. Sylvia Finch and Sheryl Smith, with some helpful suggestions from LAHCE board members, designed and sewed an amazing quilt square representing our county.

The page is framed by a decorative border of orange-outlined pumpkins. A central white rectangle with a thin black border contains the text.

CONFERENCE NEWS

I attended the state conference in Green Bay this past week. It was a nice week filled with re-uniting with old friends and making new ones.

At the annual board meeting, I was elected as State Membership Chair, previously I had been appointed to fill the position when Linda Sutherland passed away. I was installed in the position at the Tuesday Dinner along with 3 other new state board members.

The budget was the main concern at the meeting, as our expenses were far exceeding our income due to increase in many line items and decrease in membership. It was voted to raise the dues sent to the state to \$7, and increase the cost of the Update subscription to \$10 per year. These amounts have not increased in many years. Many “perks” were decreased for the executive board, and other expenses were trimmed. This will allow us to take less money from our investment fund to cover the expenses.

As membership chair, I once again had the photo frame available with many props to dress in for memorable photos. I made animal ears on headbands from felt and fur, plus had hats, glasses, and boas. A good time was had by the members dressing up for the photos. Next year's theme of Roaring 20's already has be planning what I will make and purchase.

Sheryl Smith



2025 WAHCE STATE CONFERENCE

On Sunday, September 14th, five LAHCE members headed to the Tundra Lodge in Green Bay for the 2025 State HCE Conference. Three of us (Sheryl, Linda & Cathy) made a slight detour to the Mona Rosa Winery where we did a wine sampling. We met Carolene and Sylvia at the hotel where we shared a beautiful two-story suite. It was a pajama party every night!

This year there were 246 HCE members from 41 counties at the conference, 24 of whom were first time attendees.

On Monday Sylvia, Carolene and I went on the tour of Lambeau Field. As a die-hard Packer fan, it was an amazing opportunity! We had a great tour guide, the son of a former Packer from the early years, who shared so much Packer history and several great stories. We were able to view the field from one of the corporate suites and walked the tunnel from the locker room to the playing field where a tape of cheering fans greeted us. Carolene considered doing the Lambeau Leap! Following the tour we visited the Packer Hall of Fame and did a little shopping. I found a new rubber duck with a cheese head for my Jeep!

The conference sessions that I attended were very good. The 1st was a presentation on the history of the Oneida Nation. The 2nd was on using native plants to preserve and increase endangered insects. The city of Green Bay is sponsoring a project to connect areas where an endangered bumble bee has been spotted.

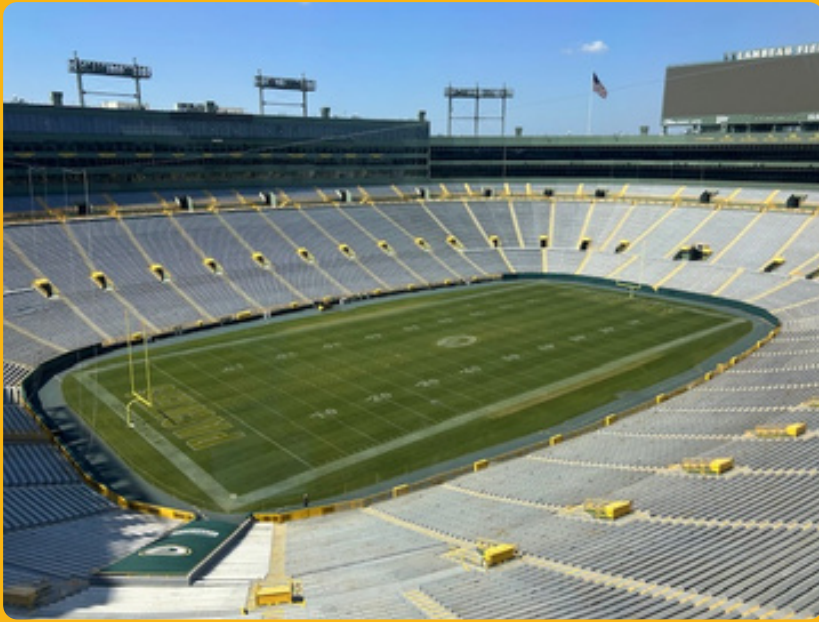
The 3rd session was on scams & fraud protection. Our presenter was Kewaunee County Sheriff Matt Joski, an energetic & engaging speaker who was also the keynote speaker for our luncheon. My 4th session was entitled 'Women Gone Wild' and focused on women who impacted American history. The 5th session was on how to avoid probate when planning your estate. Attendees had a lot of questions answered!

It was great fun to meet new people at the evening banquets where assigned seating put members at a table with new faces. Our own Sheryl Smith was sworn in as Membership Chair on the State Board. Congratulations, Sheryl! Many members, including me, dressed in wild animal clothing to stay with this year's theme: Going Wild with HCE. Sheryl made a tote full of animal ears & hats, etc. for the photo booth which was a great hit with the attendees!

I highly recommend attending the 2026 state conference in Eau Claire: Party on Gibson Street, celebrating the golden age of HCE, the Roaring 20's. It's going to be awesome!

Cathy Onsager







INTERNATIONAL REPORT

I want to thank all that gave so generously to International this year. 43 food items were collected at Fun Day, which were given to the Holmen church food pantry.

For the Wisconsin/Nicaragua Partnership, we filled a large boot sized shoe box with sewing items for their Community Centers. A bag of used ink cartridges were donated for the Haitian project.

In celebration of 60 years as partners with Nicaragua, a goal was set to send 60 water filters and buckets for families to have clean water. LAHCE gave \$25 for this project. Thanks also to Sheryl, Cathy, and Linda for going to Stevens Point and helping at the distribution center packing cartons, and the items Sheryl and others donated.

Lean Bork, International Chair



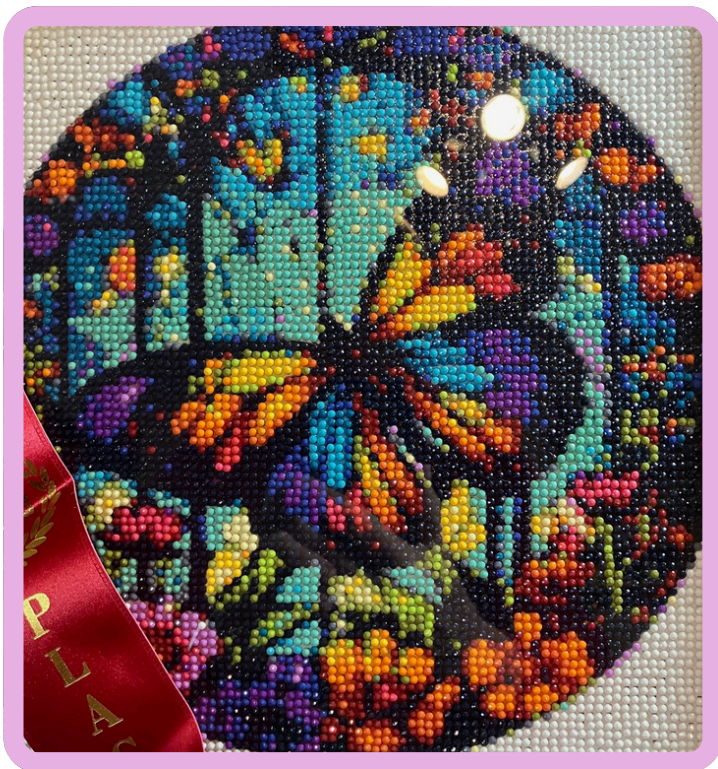
CULTURAL ARTS REPORT

At the state conference there were 337 entries from 37 counties and 35 no shows. Many items were submitted for the raffle and enough money was raised to cover expenses. Entries from La Crosse County and their awards were as follows: Cathy Onsager, diamond dots, red ribbon; Linda Gillmeister, crocheted item, red ribbon, and plastic canvas, blue ribbon; Sylvia Finch, small quilt, blue ribbon; and Sheryl Smith, wearable sewing, blue ribbon, item from recycled materials, red ribbon, tote bag, red ribbon, painting, blue ribbon, and diamond dots, red ribbon.

There were a lot of great items submitted and the judges had their work cut out for them.

Sheryl Smith for Linda Gillmeister





COOPERATIVE EXTENSION SERVICE
United States Department of Agriculture
University of Wisconsin-Extension
La Crosse County Offices
212 North 6th Street
La Crosse, WI 54601



AN EQUAL OPPORTUNITY EMPLOYER



Extension

UNIVERSITY OF WISCONSIN-MADISON
LA CROSSE COUNTY



LA CROSSE COUNTY
Exceptional services. Extraordinary place.

UNIVERSITY OF WISCONSIN-EXTENSION, U.S. DEPARTMENT OF AGRICULTURE AND WISCONSIN COUNTIES COOPERATING. UW-EXTENSION PROVIDES EQUAL OPPORTUNITIES IN EMPLOYMENT AND PROGRAMMING, INCLUDING TITLE VI, TITLE VI, TITLE IX, THE AMERICANS WITH DISABILITIES ACT (ADA) AND SECTION 504 OF THE REHABILITATION ACT REQUIREMENTS. FOR COMMUNICATIVE ACCOMMODATIONS IN LANGUAGES OTHER THAN ENGLISH, PLEASE CONTACT LANGUAGEACCESS@CES.UWEX.EDU