

CLOVERBUDDIES

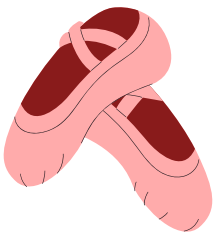
**A 4-H EXPLORATION ACTIVITY SERIES FOR
CLOVERBUD MEMBERS**



MARCH 2025

PROJECT EXPLORATION:

PERFORMING ARTS



MUSIC THEORY

Have you ever wondered why musicians have sheets of paper in front of their faces sometimes? They are “reading music,” which is its own kind of special language. Music notes are written on a “clef” and it is like a map so musicians know what note or pitch to sound. The most common clef is called the Treble Clef, and the way you can remember where the notes fall on the clef is with a silly saying. One has been done for you. Can you make up your own? If you want to challenge yourself, go ahead and make up a saying for the Base Clef as well. Good luck!

Treble Clef

A treble clef staff with five lines. Five notes are placed on the lines from bottom to top: E (purple), G (cyan), B (green), D (teal), and F (red). Below each note, the letters of the words 'Every Good Boy Does Fine' are written vertically in the same color as the note above it.

Treble Clef

A treble clef staff with five lines. Five notes are placed on the lines from bottom to top: E (purple), G (cyan), B (green), D (teal), and F (red). Below each note is a colored rectangular box corresponding to the note's color, intended for a student to write a mnemonic.

Bass Clef

A bass clef staff with five lines. Five notes are placed on the lines from bottom to top: C (purple), B (cyan), D (green), F (teal), and A (red). Below each note is a colored rectangular box corresponding to the note's color, intended for a student to write a mnemonic.

PIN PUPPETS

Puppets are so much fun to watch while giving the performer an easy way to entertain without being in the spotlight themselves. Let's make a puppet for you to practice! Gather some simple art materials from around the house, get creative and make your very own silly monster puppet out of a simple lunch sack!

MATERIALS:

- Clothes Pins (that have a spring opening)
- Colored card stock
- Glue
- Googly eyes
- Yarn or String
- Scissors
- Pen or Marker



DIRECTIONS:

1. Draw a shape on the card(stock).
2. Cut out the shape with scissors.
3. Cut across for the mouth. You can make this cut in any pattern you like such as curved, straight, wavy, or zigzag.
4. Apply glue to the peg.
5. Stick your shape to the peg ensuring the two pieces are lined up properly.
6. Use another peg to hold it open while it dries - you don't want the peg to stick together.
7. Add eyes. Cut short lengths of yarn for hair and glue in place.
8. Use your imagination to make all sorts of characters

DIRECTOR'S WORD MATCH

A Director is the person in charge of planning and producing a play or other performance. To keep things running smoothly, director's have theater lingo (language) they call on set to let everyone know what to do. See if you can match the words below with their meanings by drawing a line between them.

Word

Definition

Understudy

leave the stage to either
the left/right

Exit Stage Right/Left

repeated or additional
Performance at end.

Action

working on a Performance before
it's open to the Public

Center Stage

middle Portion of the stage area

Rehearsal

an actor who is backup to another
actor and knows all of the lines if they
need to step in

Intermission

short break between the
acts of a Play/parts of
a Performance

Encore

Direction to start the
Performance

TIPS FOR NERVES

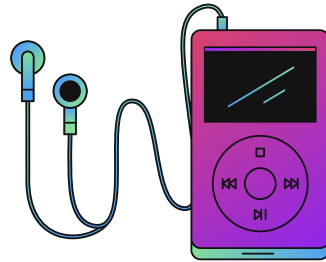
Have you ever felt nervous or scared before standing up in front of your class or talking in front of others? It is completely normal for you to be nervous, especially if it's something you don't do all the time. Below are some tips to help keep your nerves in check. Read through them and see which ones will work for you. Then, you'll be all ready for your next star performance!



MEDITATE



GO FOR A WALK / EXERCISE



LISTEN TO MUSIC



JOURNAL / WRITE



**DON'T HAVE CAFFEINE
OR SUGAR**



TALK TO A FRIEND / TRUSTED ADULT

MUSIC THERAPY

A true musician will learn to appreciate many different types of music. Find a song on the radio, TV or computer (with a parent's permission) and really listen to it. Try to pick a song that you wouldn't normally listen to. As you listen, answer the questions below. When the song is over, draw or color a picture about the song you just listened to. Will you listen to this type of music again?

1. Today, I listened to _____.

2. It was composed (written) by _____.

3. This piece of music made me think of _____

_____.

4. This piece of music made me feel _____

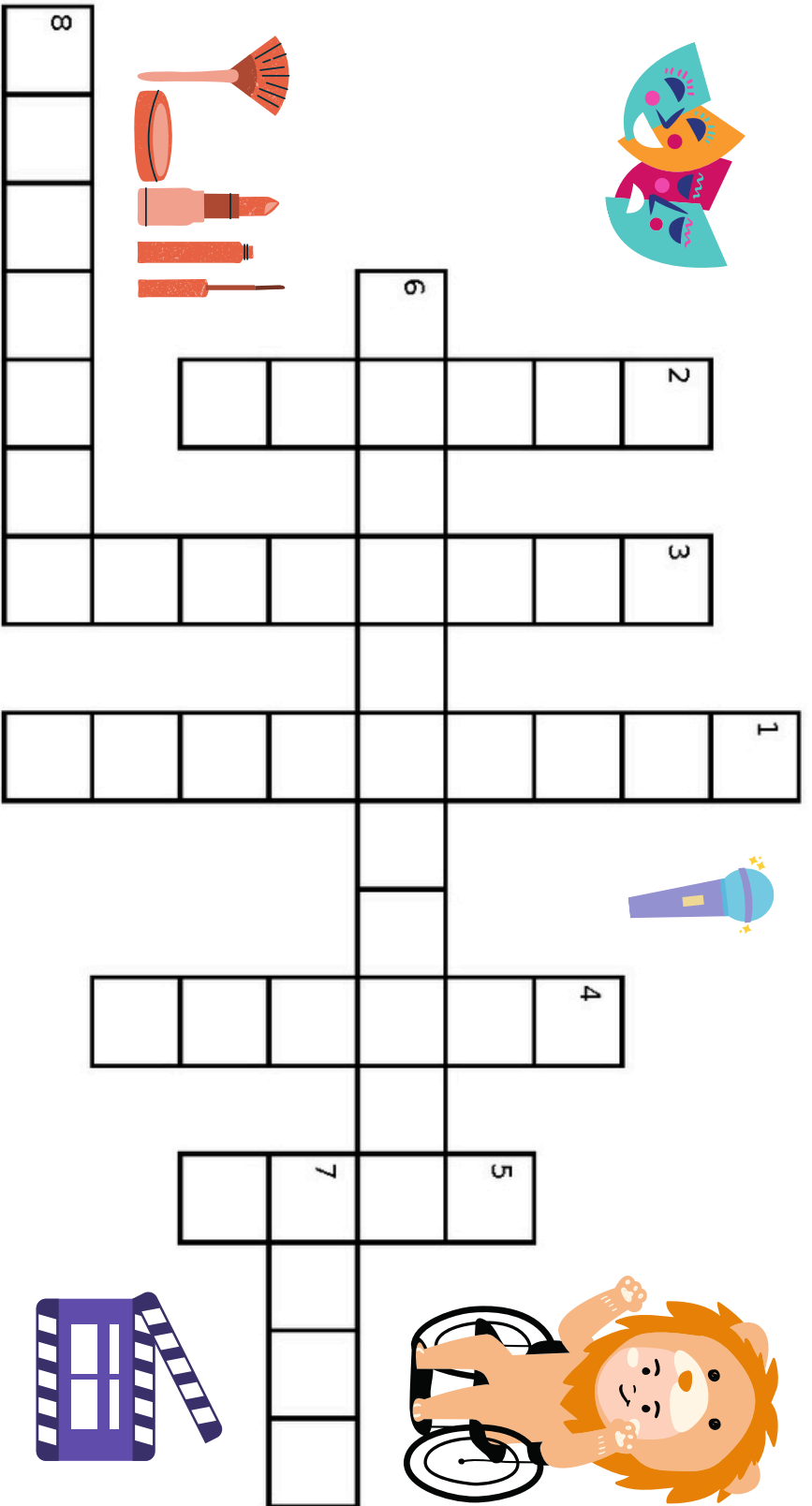
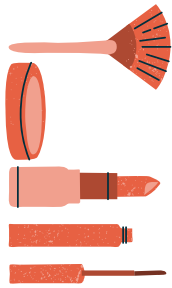
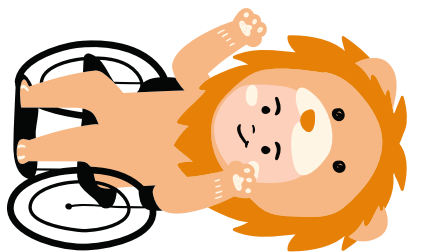
_____.

5. I LIKED or DID NOT LIKE this music (circle one)

6. Draw a picture about this piece of music here

DRAMA CROSSWORD

There is a lot to learn in the 4-H Performing Arts projects because there are so many different performing arts to choose from - music, theater, and clowning to name a few. See if you can solve the clues below to complete the Performing Arts Crossword Puzzle!



1. the area behind or beyond the stage that includes dressing rooms and wings.
2. costumes, wigs, and body paint used to transform an actor into a character.
3. costumes, and clothes cast members wear
4. concluding part of any performance.
5. group of workers who handle a specific aspect of a production.
6. the person who designs the sets for a show...in smaller theaters this person also builds the sets
7. stage direction; to leave the stage.
8. to copy or mimic the actions, appearance, mannerisms, or speech of others.

FAIR PROJECT! HOMEMADE MUSICAL INSTRUMENT

In many events with Performing Arts, instruments take a part. Instruments can be inexpensive and homemade, while some are largely expensive and complicated. Follow the instructions below you will make your own hand drums!

MATERIALS:

- plastic or paper bowls
- drinking straws
- ribbon or string
- large beads
- glue gun or strong glue
- decorations (tape, paint, markers, etc.)



TO MAKE YOUR DRUMS:

1. **Glue the ribbons and straw to your bowl.** Take a bowl and glue the tip of your paper straw to the bottom rim. It can help if you flatten the end of the straw, so that it fits better when you add the other bowl on top. Then put two blobs of glue on each side and stick down the ends two lengths of ribbon or string. You need to make sure that there is a good length of ribbon left sticking out (about 6 cm - 2.5 inches or so).
2. **Glue top bowl in place.** Take your second bowl and glue it on top of the first. A glue gun works really well for this. Simply place a line of glue all the way round the rim and stick the two bowls together. You can also use tacky glue.
3. **Tie on beads to your ribbons/string.** Thread two or three beads onto the ends of each ribbon. Then tie a double knot at the end to keep them securely in place.
4. **Decorate your drum, both sides - however you want!**

IDEAS TO CONSIDER:

- What would make your drum work even better?
- Is there a reason you decorated your drum the way you did?
- How do you think people made drums a hundred years ago?

Activity source: MasandPas.com

This can be a fair exhibit, Department 17, Class A, Item 23; Homemade Game or Musical Instrument! Visit www.lacrosseinterstatefair.com after June 1st, and you can enter this exhibit on the registration.

FEBRUARY ANSWER KEYS

Answers to all Cloverbuddies activities will appear on the back cover of the following month's issue. For answers to this issue, watch for March's installment of Cloverbuddies!

S.T.E.M. CROSSWORD FUN

E P X L E A R N I N G U F O D M K A N P
 X A P L X H G W J T S Y N R L S Y B O W
 Z B G Y P T I W W L Q R E G E D X T J W
 G W P U H V E J Y A L N Z A Q O Z F C V
 W F J S C U S Q K I G L R S A Y T V F A
 J U U G A K R I G I O C C U Q Z S A G V
 R Y K S S M J P N O H I O S R J Y E Y Z
 O T N E M I R E P X E P F C B Y E N G D
 D S R D G A E X F N Y F R V Z C O K A Z
 O O X A K R Y R C M P U Y S A Z Z V P T
 D J Y C I E P E D Q X J Y T Q L F M E O
 E I I N R U A D R A N I E M M S V I O G
 N I G K N X A G V N V C B I Y B A V U V
 R J M T N O S D N A H R Z A T W K M Y Q
 V Y M K A Z K N I N Z E N F I S J S U X
 E P A R X E V R O U P S K Y V L Y S T O
 O E T D B I C L R W W F H K I P K C R H
 D I H G O V O D J E B F U H T U H V P V
 Q R M N W G T A R T C P S W C X A R W K
 C X A U Y J W S Y E G M G Y A W F E E J

SUDOKU

| | | | |
|---|---|---|---|
| 3 | 1 | 4 | 2 |
| 2 | 4 | 1 | 3 |
| 1 | 3 | 2 | 4 |
| 4 | 2 | 3 | 1 |

| | | | |
|---|---|---|---|
| 2 | 4 | 1 | 3 |
| 3 | 1 | 2 | 4 |
| 1 | 3 | 4 | 2 |
| 4 | 2 | 3 | 1 |

| | | | |
|---|---|---|---|
| 4 | 1 | 2 | 3 |
| 2 | 3 | 4 | 1 |
| 3 | 4 | 1 | 2 |
| 1 | 2 | 3 | 4 |

| | | | |
|---|---|---|---|
| 4 | 2 | 1 | 3 |
| 3 | 1 | 4 | 2 |
| 2 | 4 | 3 | 1 |
| 1 | 3 | 2 | 4 |



An EEO/AA employer, University of Wisconsin-Extension provides equal opportunities in employment and programming, including Title VI, Title IX, and the Americans with Disabilities Act (ADA) requirements.