



UW-MADISON EXTENSION  
LA CROSSE COUNTY

# Cloverline

4-H is a **community** of **young people** **across America** who are learning **leadership**, **citizenship**, and **life skills**.

## December 2022

### in this issue >>>

- » Youth Ambassador Meeting
- » Project Meetings
- » YQCA
- » Leaders Board Meeting
- » New Family Section
- » Space Camp
- » Forms Section
- » Expressive Arts Festival
- » Archery & Pellet Gun Program
- » New Policy Section
- » Volunteer Section
- » State Opportunities
- » 2022-2023 Important Dates

*...and much more!*

## Re-Enroll to keep getting the Cloverline!

Tis the season of introspection and reflection and in January our county program will have an intern to help us further explore what works for our county 4-H and what changes we should consider. I'm going to get us started by doing something a little different that I've been thinking about for a while. It's something that will help us save money that we can use for more programming and resources, and also be more environmentally responsible.

Currently we mail out Cloverline Newsletters to all those enrolled this year, and also to all those enrolled last year, because people typically wait until April 1st to enroll and I just have no idea when people will so we want to keep them informed. That's a lot of postage for people who might not be interested. I also need members to enroll earlier in the year. From a safety standpoint - attending meetings, and county-wide events without re-enrolling puts us all at risk for some things.

**So I'm implementing a newsletter enrollment deadline. If you want to continue to receive Cloverlines for the 2023 year, you must re-enroll in 4HOnline by Dec 31, 2022.** Collaborating community members who receive this newsletter will continue, but members who have not re-enrolled by Dec 31st for the 2022-2023 year will not be mailed or emailed a Cloverline. We will only mail it to those who are enrolled. I want to note that it's still available online by the first of every month usually, however, we won't email you or mail it to your house as a reminder to look.

If you enroll after the deadline, you'll receive Cloverlines again once you enroll. You can still re-enroll your membership anytime in the year, this doesn't affect your ability to show at fair, but it might affect your notifications of meetings for groups, etc. You can join 4-H any time as well. Again, if you are enrolled - you'll receive Cloverlines.

Not sure if you've re-enrolled? Visit: <https://v2.4honline.com> to check! And let me know if you have any questions!

Emily Crook  
Positive Youth Development Educator  
La Crosse County Extension

# youth leadership >>>

## Ambassador Meeting

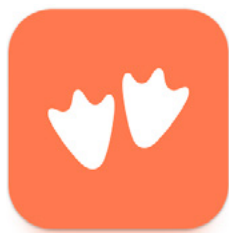
- **Date:** Sunday January 22nd, 2023
- **Time:** 6:00pm
- **Location:** La Crosse County Admin Center (212 6th St N, entrance on 7th street side)



We will get an update from Awards Committee, New Family Orientation Committee and will try out a Goosechase game from Sarah Groth!

## Goosechase Team Invite!

I'm looking for any youth (any age!) and adults who would like to be on a Goosechase team with me. People on this team would be principally responsible for:



- Helping create and run at least 2 goosechases per year. One during fair, and the other during National 4-H week.
- This involves brainstorming. A lot of brainstorming. Which we can do virtually or in person. Up to the team!
- I need you to be a creative thinker who likes challenges.
- This also would involve how to market this, etc.

So if you want a marketing and recruiting challenge to have under your belt for future leadership resources - this is the thing for you!

Interested? Email Emily at [emily.crook@wisc.edu](mailto:emily.crook@wisc.edu) and we'll get cracking!

## Citizen Washington Focus Trip 2023

- (Summer trip dates and winter registration dates coming soon!)
- For grades: 10th-12th (minimum age of 15 at time of trip)
- Registration is through 4HOnline
- Cost is approximately \$1,750 - La Crosse Leaders' Association has scholarships to cover up to 75% depending on how many attend
- For this event, the Leaders' Association will interview candidates for scholarship.

The invitation hasn't gone out yet, but it will soon! Citizenship Washington Focus, or CWF for short, is the premier week long 4-H citizenship and leadership experience. CWF brings 4-H delegations from all over the country to stay in Washington D.C., our Nation's Capital! Participants learn about the roles of Senators and Representatives in the United States' government and how these parts work together to form an effective Congress. Additionally, youth get to see and experience government in action by meeting with their State's members of Congress and watching a House of Representatives meeting. Delegates will also get the opportunity to tour our Nation's Capital and experience the culture that comes with it. After completing the CWF program, they will have stronger knowledge about being an active citizen and our Government. They will also have the opportunity to discover new skills and be exposed to different perspectives and cultures from around the U.S. On top of all this, it gives delegates another opportunity to bond and network with other 4-Hers from Wisconsin and beyond.

For more information please visit the website: <https://4h.extension.wisc.edu/opportunities/statewide-events-and-opportunities/citizenship-washington-focus/>



# Pumphouse Art Pick-Up

**Pump House exhibits and participation ribbons (one per youth, not per exhibit) have been available for pick up!**

**If you don't pick up your art, we will try to use it on our walls, we might sell it for profit (just kidding, we can't do that), or we might have to throw it away due to lack of storage. Come and get your art please!**



**Trip Dates:** APRIL 20-24, 2023

**Location:** Huntsville, AL

**Cost:** \$900 (scholarship will off-set 75% of this cost from the Leader's Association, up to 5 people) This also includes travel with the WI 4-H Program.

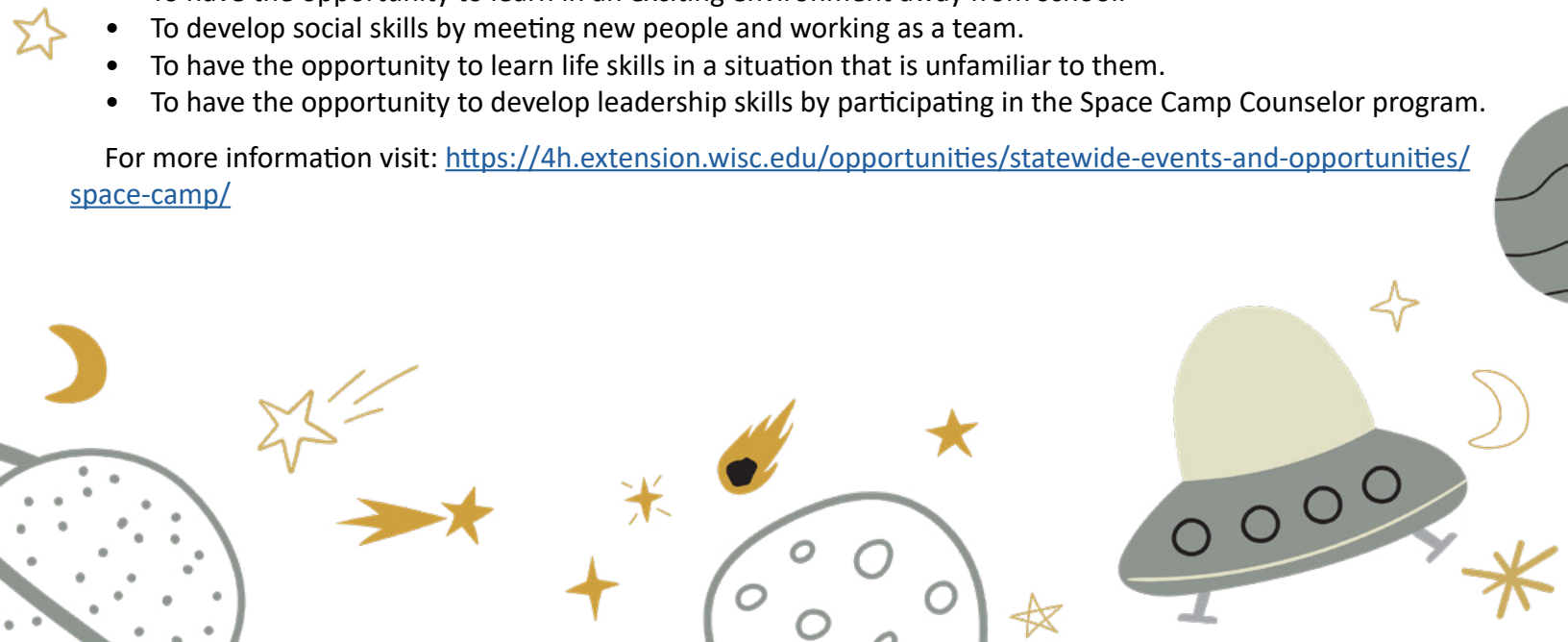
**Who:** Youth in grades 6-8

**Registration Opens:** November 15-Dec 15th in 4HOnline - this is a popular program. If you want to go, re-enroll now in 4HOnline so you aren't set back any time in registering.

Wisconsin 4-H Space Camp is an educational experience where youth from across the state take a bus down to Huntsville, Alabama, for a 4 day journey. Youth get the opportunity to venture away from home to meet new friends, develop leadership and teamwork skills, and learn all about space. They are led by a team of trained Adult Advisors and Space Camp counselors. Counselors are former Space Camp participants who are outstanding leaders. Counselors lead a variety of activities on the buses and stops along the way that help keep youth engaged and help them meet new people. As a 4-H program, our goals for youth who go through Space Camp are:

- To have the opportunity to learn in an exciting environment away from school.
- To develop social skills by meeting new people and working as a team.
- To have the opportunity to learn life skills in a situation that is unfamiliar to them.
- To have the opportunity to develop leadership skills by participating in the Space Camp Counselor program.

For more information visit: <https://4h.extension.wisc.edu/opportunities/statewide-events-and-opportunities/space-camp/>



# CLOVER COLLEGE INSTRUCTORS NEEDED

Clover College is our 4-H day of discovery. Every county has one - ours is Feb 11th and we like to offer as many classes as we can! Do you have skills you can share with our 4-H youth? Or is there a specific educational need you think our 4-H members need (Superintendents - do you want to instruct how to submit exhibits in your department at the fair)? Now is the time to let us know you want to teach at Clover College.

There are 3 sessions offered throughout the day that are 90 minutes in length. You choose how many sessions you want to do, you choose your class size, your class age range, and you can choose the class fee as well (the Leaders Board typically knocks off \$5 of every fee for every class in scholarship for the youth, you will be reimbursed in full for all class costs).

Instructors do not have to be 4-H members, volunteers, or even adults. ANYONE who has a skill, passion or something to share can teach at Clover College. We will keep sessions to things that follow 4-H policy though (speak with Emily if we need to do a risk, inclusivity, or accommodations assessment).

Sessions we've had in the past: Ceramics, Sign Language, Electronics, Lego Robotics, Sewing, Cookie Decorating, Models, Woodworking, First Aid, Astronomy, Rabbits, Cats/Small Pets, Shooting Sports, Aerospace, Origami, Vet Science, Irish Dancing, Painting, Record Books Planning, Scrapbooking, Photography.

**FILL OUT THIS FORM BEFORE DECEMBER 15TH - <https://forms.gle/ssctjtzzr5Dn48RF9>**

If you don't have a skill but know someone who would be amazing at sharing theirs? Reach out to Emily, or feel free to send them this form, too. If you have an idea for a class but don't have someone in mind to instruct tell us anyway! [emily.crook@wisc.edu](mailto:emily.crook@wisc.edu).

## animal sciences>>>

### Horse Opportunities

Are you a youth interested in expanding your horsemanship and developing leadership skills? Considering joining the La Crosse County 4H Drill Team. For more information or any questions/concerns, please contact the coach, Macy Carty at [mcarty.wi@gmail.com](mailto:mcarty.wi@gmail.com) by Monday, January 9th.



### YQCA

Anyone planning on auctioning swine, sheep or beef this summer at the La Crosse Interstate Fair (our county fair!) needs to complete the 2022 Youth for the Quality Care of Animals (YQCA) training. It's a national multi-species quality assurance program for youth ages 8 to 21 with a focus on three core pillars: food safety, animal well-being, and character development. Every year the course is a little different, but it is solid quality education from some serious organizations. And this year, the La Crosse Youth Livestock Committee is requiring all youth in livestock projects who plan to auction this summer to complete this training. A special note: this is only for youth who plan to participate in the auction. It's not required of any other animal exhibits, just the auction.

Online training: Costs \$12 and is available right at this very moment at <https://yqcaprogram.org/>. You can take the training or do a test-out for certification.

The La Crosse 4-H Leader's Association will reimburse \$3/youth when they receive a copy of the completion certificate.

When you complete your training online, YOU need to save a copy of your certification and email it to [lacrosseyouthlivestock@gmail.com](mailto:lacrosseyouthlivestock@gmail.com) (and if you request reimbursement, please email it to [lacrossecounty4h@lacrossecounty.org](mailto:lacrossecounty4h@lacrossecounty.org) as well). Any questions? Feel free to reach out to us: 608-785-9593 or either the emails above.

# 4-H Meats Judging Contest

Mark your calendars for the upcoming State 4-H Meats Judging Contest on Saturday, February 4, 2023! If you have participated in the past or this is the first time you are hearing about the contest, we would love to have you join us for this day of learning, fun, and competition.

## What is the 4-H Meats Judging Contest?

Have you been to your local meat market or grocery store lately and think you could choose the best cut of meat out of the case? Have you ever watched a live animal contest and thought you could choose what animals would provide the best meat products? This is your opportunity to put those skills to work. This contest tests the knowledge of youth in the placement of carcass and retail cut classes, carcass grading, and retail cut identification. Top teams earn the opportunity to compete at regional and national competitions.

## Who can participate?

You must be a currently enrolled WI 4-H member to participate in this contest. The age divisions are: Junior – Age 8-13 as of January 1, 2023; Senior – Age 14-18 as of January 1, 2023. WI 4-H members that are in the 13th grade and have reached their 19th birthday prior to January 1, 2023 are eligible to compete at this state contest as individuals but not as a member of a team. Youth must be in or completed 3rd grade, 8-year-old Cloverbuds cannot participate. Even if your county has not participated in the past, round-up some 4-H friends and take advantage of this fun opportunity to show your knowledge of the animal species and industry.



**Looking for more information, where to register, or resources to study from? Check out the links below:**

### 4-H Meats Judging – Saturday, February 4, 2023

Location: \*New\* Meat Science and Animal Biologics Discovery Building, UW Madison Campus

Deadlines: (more information located in the registration materials link below):

-Estimated number of participants (needed to order PPE): January 20, 2023 - through Google form

-Final registration: January 20, 2023 - through 4-H online

More information and registration available at:

<https://4h.extension.wisc.edu/opportunities/statewide-events-and-opportunities/meats-judging-contest/>

If you have any questions, please contact Jill at [jill.jorgensen@wisc.edu](mailto:jill.jorgensen@wisc.edu)/phone at 920-391-4659 or Bernie at [borourke2@wisc.edu](mailto:borourke2@wisc.edu)/phone at 608-263-4304.

# FORMS SECTION

## Archery & Pellet Gun Program Sign-Up:

<https://forms.gle/nraRApZBQn99iqFJ9>

For the 2022-2023 we have decided to make things as mobile friendly as possible. People don't have printers anymore, it's just inconvenient. There will ALWAYS be paper options, and if you'd like paper copies, please just let us know and we will provide them for you. However, we're going to look at making all forms online, and having them permanently in the Cloverline, so if you need a form, you have it. They will be on our website as well. As forms come to be, we'll start posting them in this section and will focus on events and club forms first.

## Clover College Call for Instructors:

<https://forms.gle/ssctjtzzr5Dn48RF9>

## Expressive Arts Registration:

<https://forms.gle/g79L6DZp5gRddmaq8>

## 2022-2023 Event Dates

- 12-8-22: Leaders Holiday Party
- 1-7-2023: Archery / Pellet Gun Program
- 1-14-2023: Expressive Arts
- 2-11-2023: Clover College
- 3-11-2023: Foods Workshop
- 04-16 - 06-4-2023: Holmen Archery Program
- 04-TBD-2023: Fur, Fin Feather
- 06-TBD-2023: 4-H Loggers Day
- 06-26-2023: Foods Revue
- 07-TBD:2023: Clothing Revue
- 07-19 - 07-23-2023: La Crosse Interstate Fair
- 06-11 - 06-13-2023: Summer Camp



# AREA 13 SUMMER CAMP

**adult chaperones are a must!**

**SUNDAY, JUNE 11TH -  
TUESDAY, JUNE 13TH, 2023**



**Time:** Sunday Noon - Tuesday 2pm

**Location:** Upham Woods (Wisconsin Dells) - we will have a bus transport

**Cost:** Generally \$150-\$160 for youth. Will confirm closer to the date with registration.  
Leader's Association covers half the cost of 4-H members.

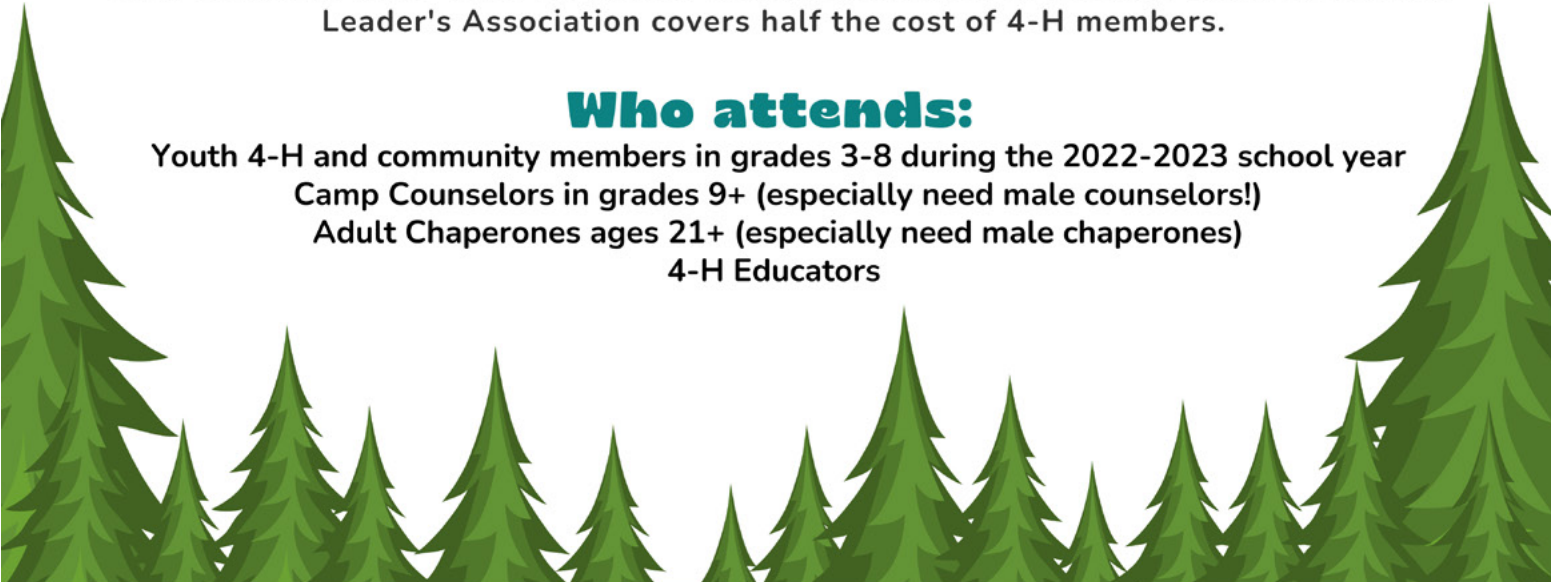
## **Who attends:**

Youth 4-H and community members in grades 3-8 during the 2022-2023 school year

Camp Counselors in grades 9+ (especially need male counselors!)

Adult Chaperones ages 21+ (especially need male chaperones)

4-H Educators



We can only take so many youth per adult chaperone (ratio is 10:1 but at camp we don't all neatly fit in groups of 10). So in order to offer as many possible youth slots for a great camp experience, I'm hoping to get 4 adult chaperones from our county. It's a large ask. You might have to take time off. But if I can get 2 men and 2 women (or more!) to step up NOW, I can promise a great camp experience for our campers.

You don't have to be an avid camper to chaperone at camp. You don't have to be an avid 4-Her. We will train you in your responsibilities, and ensure you have a rewarding experience. This is not a tent camp. It's a cabin camp (if that helps). This might be something if all your kids are going, or a first-timer is going, maybe you want to come with! Or maybe you don't have kids old enough to go, or they aged out, or no kids yet, but you want to help and join in the fun. Your camping fee is covered! Curious? Have questions? Interested? Email Emily at [emily.crook@wisc.edu](mailto:emily.crook@wisc.edu). And we'll discuss!

# volunteer section >>>

## Announcing the 2023 Leader's Association Board!

**President:** Tina Langrehr  
**Vice-President:** vacant at this time  
**Past President:** Kirsten Harris  
**Secretary:** Shari Hegland  
**Treasurer:** Linda Saley  
**AG Society Rep:** Carolyn Christopherson  
**La Crosse/Onalaska Rep:** Nancy Wakefield

**Holmen/Mindoro Rep:** Rick Shisler  
**West Salem Rep:** Pam Hoth  
**Bangor Rep:** Sue Kramer  
**At-Large Rep:** Mikayla Fechner  
**At-Large Rep:** Stacey Sheffield  
**Ambassador Reps:** Mya Hoth & Ruth Roths

Thank you to everyone who stepped up for these roles, it's going to be a great year!

## Leaders Board Meeting

**Date:** Thursday, January 12th, 2023

**Time:** 6:45 p.m. (Open Forum)  
7:00pm (meeting)

**Location:** Hamilton Town Hall in West Salem (N5105 Leonard N, West Salem WI, 54669)

There will be an open forum at 6:45 p.m. for anyone wishing to address the committee. We are working on expanding our county award system and assisting new families - come join in the fun!

We will be reviewing county 4-H awards, new family orientation plans, and starting to gear up for fair! If any of this interests you, please come - you are definitely invited!

## Updated Volunteer Training

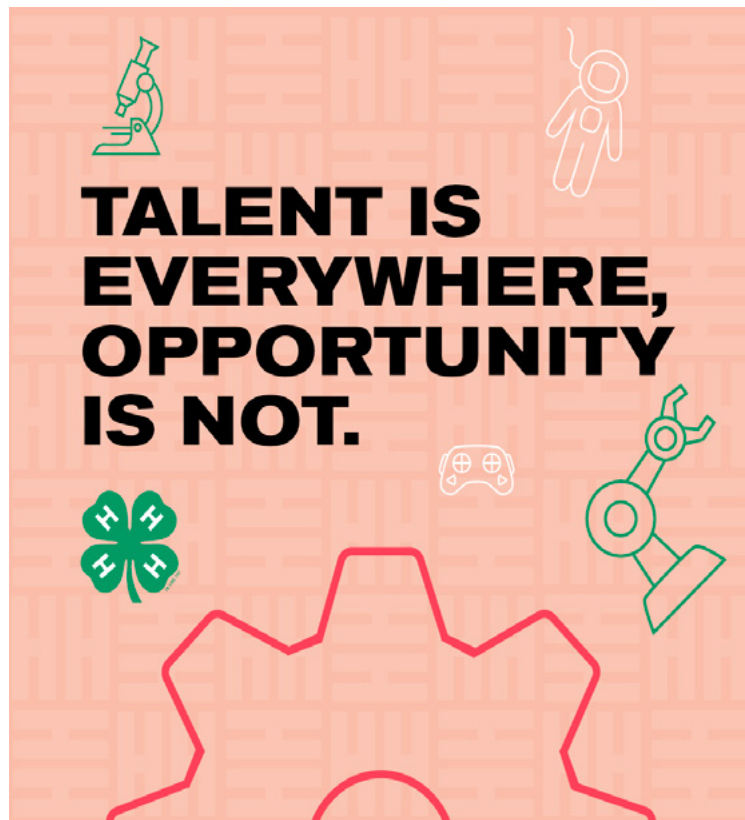
This Fall we are working on consolidating and streamlining our trainings for volunteers into a format that is easier to complete and digest. For now, please note that for overnight events, where youth are not in the presence of their parents, groups need at least 2 chaperones trained in Supporting Youth Mental Health. If you need this training, it's being offered in person and online, I can open a local in person one, just let me know you need it. (And if you aren't sure if you need it, please reach out to me and we'll figure it out!) For those who are not chaperones, just to ensure we're all aware of the trainings needed at this time for anyone registering to be a volunteer - they are:

### Volunteer Training Modules:

- Module 1: Complete UW Madison Title IX Training
- Module 2: Complete UW System Mandated Reporter Training
- Module 3: Complete Division of Extension Volunteers In Preparation (VIP) Training\*\*
- Module 4 (for chaperones only): Volunteers serving as a chaperone will need to also complete the Supporting Youth Mental Health Training

For the information and registration for these trainings - please visit here: <https://4h.extension.wisc.edu/resources/wisconsin-4-h-policies/4-h-volunteers/>

And for any questions, please reach out to Emily at [emily.crook@wisc.edu](mailto:emily.crook@wisc.edu) or 608-785-9593



## cloverbud & exploring >>>

### Take and Learn Opportunities

**Exploring Kit: The Head, Heart, Hands, Health project box** is designed for Cloverbud-aged youth. Youth and Families can attend four sessions with 4-H Educators teaching the sessions! Youth will receive a project box with supplies, but families will still need to provide some of their own supplies. Virtual sessions will be Tuesdays at 6PM, January 17, January 31, February 14 and February 28.

**Exploring Kit: The "Let's Celebrate!" project box** and Zoom series will include paper art, food science, wellness, and games over 3 sessions. As a bonus, you can participate in a fun and interactive experience using the popular Goosechase app. Recordings of the sessions will be available for 30 days afterwards. Virtual Sessions will be Tuesdays at 6PM, January 24, February 7, February 21 and an ongoing Goosechase.

## VIRTUAL LEARNING COMMUNITY & TAKE AND LEARN

### YOUR COUNTY

Featuring

### Cloverbud Project Box Series

K-2nd Grade  
TUESDAYS via Zoom  
6:00-7:00 PM

- **January 17**- Head- Straw Rockets
- **January 31**- Heart- "The Day You Begin" Book
- **February 14** -Hands - Lava Mug Cake
- **February 28** Health- 4 H yoga, Calm Jars, Nature Mindfulness

### Let's Celebrate! Exploring 4-H

3-6th Grade  
TUESDAYS via Zoom  
6:00-7:00PM

- **January 24**- So Much to Celebrate- Paper Art
- **February 7**-Science Behind the Perfect Party- Baking and Dyeing Techniques
- **February 21** Staying Connected- Taking care of ourselves and others
- **Ongoing**-Find the Fun! The entire series with a special Goosechase

## Save the Date

**Watch for Registration Information coming in December!**



# Expressive Arts Festival

**Date:** Saturday, January 14th  
**Time:** 9:00 a.m. to 1:00 p.m. (\*generally)  
(dependent on number of participants).  
**Location:** Christ-St. Johns Lutheran School,  
500 Park St, West Salem, WI  
**Grades:** K+

Expressive Arts is an opportunity to learn how to incorporate your artistic expression in your performances and exhibits as well as a way to try something new!

All types of performance will be judged by merit and participation this year. Just do your best and try new things! Please note that adjustments have been made to rules and guidelines this year, and of course, if you have any questions, please contact us at 608-785-9593 or [lacrossecounty4h@lacrossecounty.org](mailto:lacrossecounty4h@lacrossecounty.org). Don't forget to visit the website for up-to-date information and registration: <https://tinyurl.com/4Hexparts>  
To sign up, please do so online: <https://forms.gle/LKVnRF1fHLpaAq2C6> by December 30, 2022

To review the linked copies below, please click on links or visit: <https://lacrosse.extension.wisc.edu/4-h-youth-development/events-activities/county-festivals/>

Expressive Arts Festival Family/Participant Handbook (pdf 5 pages) (<https://lacrosse.extension.wisc.edu/files/2022/01/Guideline-Handout-2022.pdf>)

Exhibit Rubrics – see what qualities the judges are judging on (pdf 16 pages) (<https://lacrosse.extension.wisc.edu/files/2022/01/All-2022-Expressive-Arts-Rubrics.pdf>)

These are all your options of performance and exhibits. We'd love to see your talent. Sign up today!

# Categories:

## Drama Categories (all group focused)

1. **Published Play:** A 30-minute group production, using a published script. Props and costumes are encouraged.
2. **Original Play:** A 30-minute group production, using an original (un-published or devised) script. Props and costumes are encouraged
3. **Play Reading:** Readers are to make their selection "come alive" without the use of costumes or props. Appropriate gestures and human-produced sound effects (no artificial devices) are allowed. Scripts are to be used. Maximum time limits and groups must consist of 3 or more participants..
4. **Dual-Acting Performance:** A 10-15 minute two-person, memorized production where there is minimal eye or physical contact between performers but will act a script of generally two or more characters. No props or costumes allowed.
5. **Entertaining Performance:** Produced with minimal props and costumes that can be performed in any room. Examples include skits, puppetry, group improvisation or creative dramatics. Maximum time limit is 12 minutes.

## Music Categories - NOT limited to groups anymore:

1. **Instrumental:** Performance from any genre using only musical instruments.
2. **Vocal:** Performance from any genre using their voices only. Costumes are permitted, but no props are allowed.
3. **Dance:** Performance choreographed from any genre. Costumes and props are permitted, but the focus should be on movement. Music set to the choreography may only be instrumental.
4. **Novelty:** Performance provides musical, vocal, or movement entertainment by combining a variety of instrumental, vocal, or dance techniques. Examples of a Novelty performance include, but are not limited to lip syncing, variety shows, show choirs, or other musical performances that do not fit in the first three categories above.

## Speaking:

1. **Memorized Selection:** Prose, poetry, or any other piece that must be memorized presented by an individual. No notes allowed. Maximum time limit is 5 minutes.
2. **Literary Reading:** Includes prose and poetry pieces presented as a reading by an individual. No props or costumes allowed. Maximum time limit is 5 minutes.
3. **Original Speech:** A speech written by and presented by an individual on any subject, preferably one pertaining to his/her 4-H project work. Notes are permitted. Maximum time limit is 5 minutes.
4. **Storytelling:** Original or published narrative, told as if to a younger audience, and presented without notes by an individual. No poetry is allowed. Costumes or props are encouraged, and facial expressions or gestures are allowed. Maximum time limit is 12 minutes, props are allowed.

## Arts & Crafts, Marketing and Photography Categories

1. Participants submit arts & crafts items for display and judging. Youth are not required to be present for the day, but can simply drop off their exhibits in the morning and pick them up in the afternoon after judging.
2. Please review the Family and Participant Handbook for more detailed information.

# policy section



Read on for a different policy highlighted each month with links to where you can read more about it, and also submit feedback to the people with authority.

We want our environments to be as safe as possible for our youth, but we also acknowledge 4-H needs to do a lot of a trial... and error... and FUN. If you have questions or concerns on how to adhere to these policies Emily is always willing to chat with you about it and get you the information and the resources you need.

## **THIS MONTH WE LOOK AT:**

### **Sledding, Tubing or Tobogganing**

4-H volunteers must discuss the activity with participants to assess risk and ensure controls are in place to reduce or eliminate the potential for injuries and hazards. In addition, these policies must be followed:

- 4-H sledding and/or tubing activities must take place on a hill designated by a local municipality or other government entity as approved for that purpose or on the premises of a “ski area operator” as defined in Wisconsin Statute 167.33 OR at a hill that can meet all the relevant safety standards listed below and is approved by the 4-H Program Educator. A visual inspection at the site of the hill must take place prior to approval.
  - Participants may not ride near roads, wooded areas, or bodies of water.
  - Ensure the path is clear of rocks, sticks, poles, ice, permanent obstacles, and other potential hazards.
- 4-H volunteers must check and monitor weather conditions prior to and during the activity, as weather affects speed, visibility, and the possibility of frostbite or hypothermia.
- Appropriate clothing must be worn for participant safety.
- Sleds and tubes may not be pulled behind a motor vehicle.
- During sledding, the 4-H club or group will designate a leader/volunteer to supervise the hill and be within sight and sound of all participants, unless provided by a rented or contracted facility.
- The 4-H volunteers should review how to load and unload from the tow rope (if appropriate), stopping the tube, and awareness of other riders

Each individual engaged in sledding, tubing and tobogganing activities MUST follow the following safety rules as outlined in Wisconsin Statute 167.33: <https://docs.legis.wisconsin.gov/statutes/statutes/167/33>.

For all of the newly updated policies - please visit: <https://4h.extension.wisc.edu/resources/wisconsin-4-h-policies/4-h-project-and-activity-policies/>.

# shooting sports >>>

## Shooting Sports Apparel!

La Crosse 4-H Shooting Sports worked hard to update their logo this year and have an opportunity for families to purchase merchandise here: <http://www.bbgraphics.net/4hss.html>.

If you order by December 4th, you'll get it before Christmas!

## Save The Date: Holmen Archery Program

**When:** Sundays

April 16th, 23rd, & 30th, 2023

May 7th & 21st, 2023

June 4th, 2023

**Time:** 9:00 a.m., 10:00 a.m., or 11:00 a.m.

**Where:** Arrows in the Square (N7681 Caseberg Coulee Rd., Holmen WI 54636 (Outside))

More information and registration coming soon!



## Archery and Pellet Gun Program

**When:** Saturdays

January 7th & 21st, 2023

February 4th & 18th, 2023

March 4th & 18th, 2023

Invitational April 1st, 2023

**Time:** 8:00 a.m., 9:00 a.m., or 10:00 a.m.

**Where:** La Crosse Archery (1231 Oak Forest Dr., Onalaska, WI 54650)

**Who:** Youth in grades 3+ for Archery, **and grades 4+ for Pellet Gun**

**Cost:** Archery: \$6 for 4-H member, \$10 for community member

Pellet Gun: \$10 FOR 4-H member, \$15 for community member (price differential is due to insurance fee!)



We are ready for the annual Archery and Pellet Gun program! The sessions start with youth learning safety and basics of shooting followed by practice sessions and concluding with an inter-program tournament on the last day. If you are wanted to participate in the 2023 La Crosse County Interstate Fair youth archery tournament, this is one of the ways to get in your safety session requirements. All necessary equipment is provided!

This popular program fills up fast and spots are awarded on a first-come, first-served basis. **No spots will be held without payment received in full. 4-H members must be enrolled in 4HOnline for the 2022-2023 year at the time of registration for this program in order to be eligible for the 4-H member prices.** Because extra insurances are provided, proof of hunter's safety certification is not required for pellet gun participation.

If interested, please fill out the online registration form, here: <https://forms.gle/nraRApZBQn99iqFJ9>. Paper registration forms can still be found on our website if needed: <https://lacrosse.extension.wisc.edu/4-h-youth-development/4-h-projects/shooting-sports/>.

**Registrations are due by 4:30 p.m. Thursday, December 29, 2022.** Please direct any questions to the Extension Office at 608-785-9593 or [lacrossecounty4h@lacrossecounty.org](mailto:lacrossecounty4h@lacrossecounty.org).

# new family section

Each month we hope to provide some helpful hints, definitions, and to-dos to assist new families in joining in on club and county activities. If you haven't been invited to a club meeting yet, please reach out to our office at [lacrossecounty4h@lacrossecounty.org](mailto:lacrossecounty4h@lacrossecounty.org).



For more information on 4-H volunteering - visit <https://4h.extension.wisc.edu/resources/volunteer-resources/> to learn more!

## words

Did you know 4-H educators strive to write at a 5th grade level so everyone can understand us? It's SO hard to do. Also, we're a government organization, housed in a land-grant institution - what does all that even mean? It means that at times, I have to translate really heady educational language (models, theories) and governmental language (policies, outcomes) into every day language, and sometimes I'm not good at it, but I'm always working on it!

In 4-H we have a lot of words we toss around that can mean different things for different events and that can get massively confusing. Let's clear it up a bit!

## at the meetings

Let's jot down what terms you might be confused about. There are probably stories attached to them that need a lot of explanation! Do not hesitate to ask someone for more background on those terms. Each club has their own history and traditions and as you start to belong you'll understand more and more. However, clubs love sharing their stories, but it might not occur to them when they are necessary.

Reach out to your club's secretary, president or adult leader to help you understand those terms and stories!

## county communications

There will be terms in the Cloverline that you don't understand - please email me at [emily.crook@wisc.edu](mailto:emily.crook@wisc.edu) those terms! I want to know so I can give more clarity. Also - the state newsletter for this month focuses on general 4-H terms to help you flex that vocabulary.

You can access this issue here: <https://lacrosse.extension.wisc.edu/files/2021/10/Copy-of-4.-Terminology.pdf> We want everyone to be on the same page as much as possible here. So do let us know if you need assistance!

# december 2022

Sun	Mon	Tue	Wed	Thu	Fri	Sat
				1	2	3
4	5	6	7	8 Leaders Holiday Party	9	10
11	12	13	14	15 Space Camp Registration Closes	16	17
18	19	20	21	22	23 Extension Office Closed	24
25	26 Extension Office Closed	27	28	29 Archery & Pellet Gun Program Registration Due	30 Expressive Arts Festival Registration Due	31

# january 2023

Sun	Mon	Tue	Wed	Thur	Fri	Sat
1	2 Extension Office Closed	3	4	5	6	7 Archery & Pellet Gun Program Session 1
8	9	10	11	12 Leaders Board Meeting	13	14 Expressive Arts Festival  Archery & Pellet Gun Program Session 2
15	16 Extension Office Closed	17	18	19	20	21
22 Ambassador Meeting	23	24	25	26	27	28
29	30	31				

**COOPERATIVE EXTENSION SERVICE**

United States Department of Agriculture  
University of Wisconsin—Extension  
La Crosse County Offices  
212 6th St. N Suite 2200  
La Crosse, WI 54601

NONPROFIT ORGANIZATION

**U.S. POSTAGE PAID**

LA CROSSE, WI  
PERMIT NO. 588



The Cloverline 4-H Newsletter is produced monthly by the La Crosse County UW-Extension Office, 212 6th St. N. Suite 2200, La Crosse, WI, 54601 in cooperation with the University of Wisconsin-Extension, Madison, WI. Wisconsin Relay—711.

**4-H Contact Information:**

LaCrosseCounty4H@lacrossecounty.org  
608.785.9593  
608.789.4808 (fax)

The Cloverline can be found in color and with hyperlinks online at <http://lacrosse.uwex.edu/4-h-youth-development/cloverline-newsletter/> or 4HOnline.

We thank all who volunteer their time and talents to contribute to this newsletter.