

SEPTEMBER 2020

Agriculture News

OFFICIAL NEWSLETTER OF
DIVISION OF EXTENSION LA CROSSE COUNTY



HELLO EVERYONE, AND HAPPY FALL!

IT'S HARD TO BELIEVE IT'S SEPTEMBER ALREADY. HERE AT THE EXTENSION OFFICE IT HAS BEEN A BUSY SUMMER DEVELOPING WORKSHOPS FOR THIS COMING FALL AND WINTER. PROGRAMMING WILL LOOK A BIT DIFFERENT THIS YEAR DUE TO THE IMPACTS OF COVID-19. WE WILL CONTINUE TO OFFER VIRTUAL OPPORTUNITIES, AND WOULD LOVE TO HAVE YOU JOIN LIVE AND INTERACT WITH US IF POSSIBLE. IF OUR TIMES DO NOT WORK WITH YOUR SCHEDULE, MOST OF PROGRAMS ARE BEING RECORDED SO THAT YOU MAY WATCH THEM AT A TIME THAT IS CONVENIENT FOR YOU.

IN THIS NEWSLETTER YOU WILL FIND A FEW UPCOMING PROGRAMS LISTED BELOW. IN NOVEMBER WE WILL VIRTUALLY HOST THE PEST MANAGEMENT UPDATE. WHEN I RECEIVE MORE INFORMATION ABOUT THIS EVENT, I WILL POST IT ON THE EXTENSION WEBSITE AS WELL AS SEND A LETTER OUT TO LET YOU KNOW DATES AND TIMES.

ONE OF MY COWORKERS LIKES TO PICK A WORD EVERY YEAR TO LIVE BY, AND IF I HAD TO PICK A WORD TO CURRENTLY DESCRIBE AGRICULTURE IN LA CROSSE COUNTY, IT WOULD BE RESILIENT. DESPITE PANDEMICS, DROUGHT CONDITIONS, AND VOLATILE MARKETS, YOU CONTINUE TO PUSH FORWARD.

IF YOU FIND YOURSELF IN A PLACE WHERE YOU ARE STRUGGLING WITH DEPRESSION, ANXIETY OR JUST NEED SOMEONE TO TALK TO, THERE ARE RESOURCES OUT THERE THAT CAN HELP. THE WISCONSIN FARM CENTER NOW HAS A 24/7 HOTLINE, PLEASE GIVE THEM A CALL AT 1-888-901-2558.

KAITLYN DAVIS
608-785-9593
AGRICULTURE EDUCATOR
KAITLYN.DAVIS2@WISC.EDU



SEPTEMBER 2020

UPCOMING EVENTS

Badger Crop Connect

This webinar series, hosted by Extension Crops and Soils educators, is held every other Wednesday from 12:30 – 1:30 pm through September.

September 9th

Jerry Clark, Chippewa County Agriculture Educator, will discuss local updates on crop conditions. Shawn Conely, UW Madison Extension Soybean and Small Grain Specialist, will discuss the top 10 recommendations for Winter Wheat Establishment in 2020

Wise Wednesdays

Sick of seeing the same folks everyday? Want to connect with folks and learn a little? Check out Wise Wednesdays ONLINE every Wednesday 11:00 am -12:00 pm. This is not your typical aging/retirement group. Have fun and connect with other older adults to socialize, learn tools to cope with normal aging, and improve your joy in your day to day life. Join Heather and Kaitlyn from Extension and Amy and Kassie from Parks and Rec and other fun folks in this interactive and fun session.

Dairy Webinars and Podcasts

<https://fyi.extension.wisc.edu/dairy/resources/webinars/>

This is a resource list of pre-recorded webinars extension has done over the years on dairy production. Feel free to review the Dairy Teams website for even more information on upcoming virtual state events.

Resources

La Crosse County Extension Opportunities

<https://lacrosse.extension.wisc.edu/virtual-programming-opportunities/>

Harvest of Hope

<https://fyi.extension.wisc.edu/news/2020/08/24/harvest-of-hope-resources/>

Livestock Webstie:

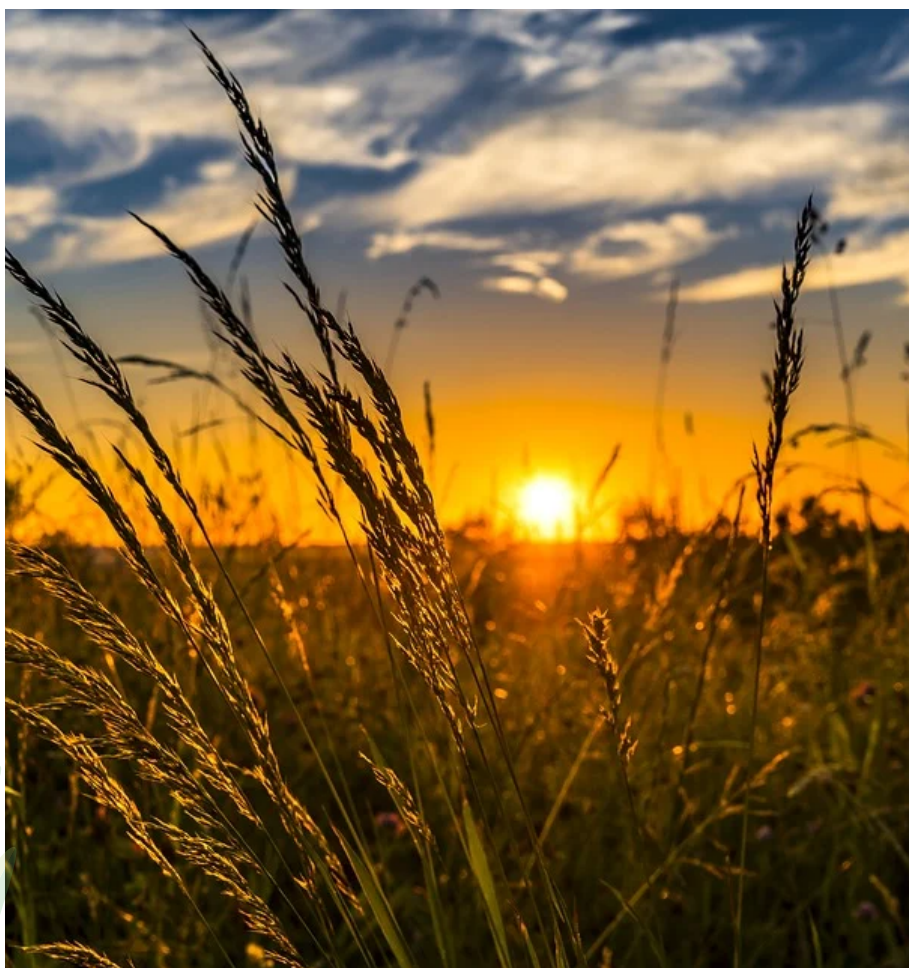
<https://extension.wisc.edu/agriculture/livestock>

Corn Silage Article:

<https://www.farmprogress.com/crops/timely-tips-harvesting-corn-silage>

"Agriculture was the first occupation of man, and as it embraces the whole earth, it is the foundation of all other industries."

-E. W. STEWART



Extension
UNIVERSITY OF WISCONSIN-MADISON
LA CROSSE COUNTY



LA CROSSE COUNTY